

OM600

Specifications and Technical Data

TYPICAL APPLICATIONS:

SOURCE CAPTURE OF:

- MACHINE MOUNT FOR OIL / MACHINING MIST / SMOKE
- SMALL DRY DUST APPLICATIONS
- REMOTE CAPTURE WITH 6" DIA. HOSE



STANDARD FEATURES:

- 600 CFM NOMINAL
- UP TO FOUR-STAGE FILTRATION
- SIDE LOAD, EASY FILTER ACCESS THROUGH HINGED DOOR
- CAM-LOCK POSITIVE FILTER SEALING
- HEAVY DUTY DIRECT DRIVE BLOWER
- POSITIVE SEALING CABINET
- 6" DIA. INLET SIZE
- ANGLED INLET PLENUM TO FACILITATE COOLANT DRAINAGE
- SLOTTED RAILS FOR EASY FILTER INSTALLATION

OPTIONS:

- MINI-HELIC GAUGE OR MAGNEHELIC GAUGE
- MULTIPLE PRE-FILTER OPTIONS
- SLOTTED LEG OPTIONS 10" OR 16" TALL
- HIGH EFFICIENCY MIST-X PRE-FILTER
- PAINT OPTIONS: CRIMSON RED, BLACK, OR STORM GRAY
- 3/4 HP, 120V / 220V SINGLE PHASE ELECTRICS
- 3/4 HP, 208-230/460V THREE PHASE ELECTRICS
- EXHAUST OPTIONS:
- STANDARD EXHAUST FRONT, LEFT AND REAR
- TOP EXHAUST OR TOP EXHAUST WITH 99.97% HEPA AFTER-FILTER
- COPPER OR PVC P-TRAP

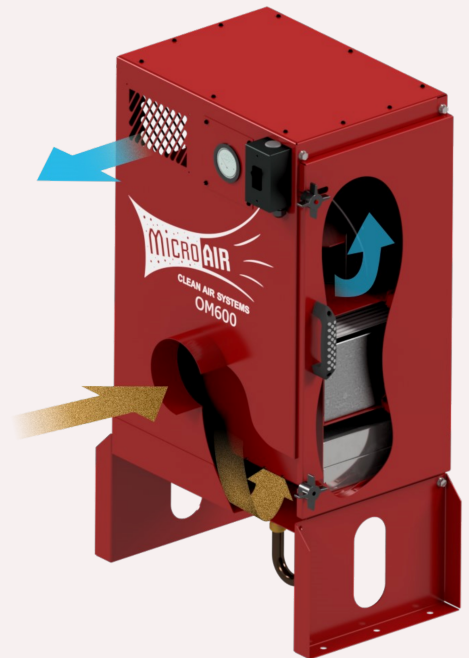
Optional High-Efficiency Mist-X Prefilter

Micro Air's Mist-X pre-filter, constructed of multiple v-shaped pockets, positioned in an offset arrangement, creates a vortex, causing the oil and mist to impinge into the chevron pockets. This vortex action causes oil mist and smoke particles to impinge on the walls of the filter where they are then removed from the air stream and drained from the filter into the sump.

HOW IT WORKS:

Mist laden air flows through the front 6" diameter inlet. The air then turns 90 degrees and travels upward through the pre-filter section, where most of the mist is eliminated. The contaminant laden air then travels through the 6", 95% ASHRAE, high efficiency mist filter.

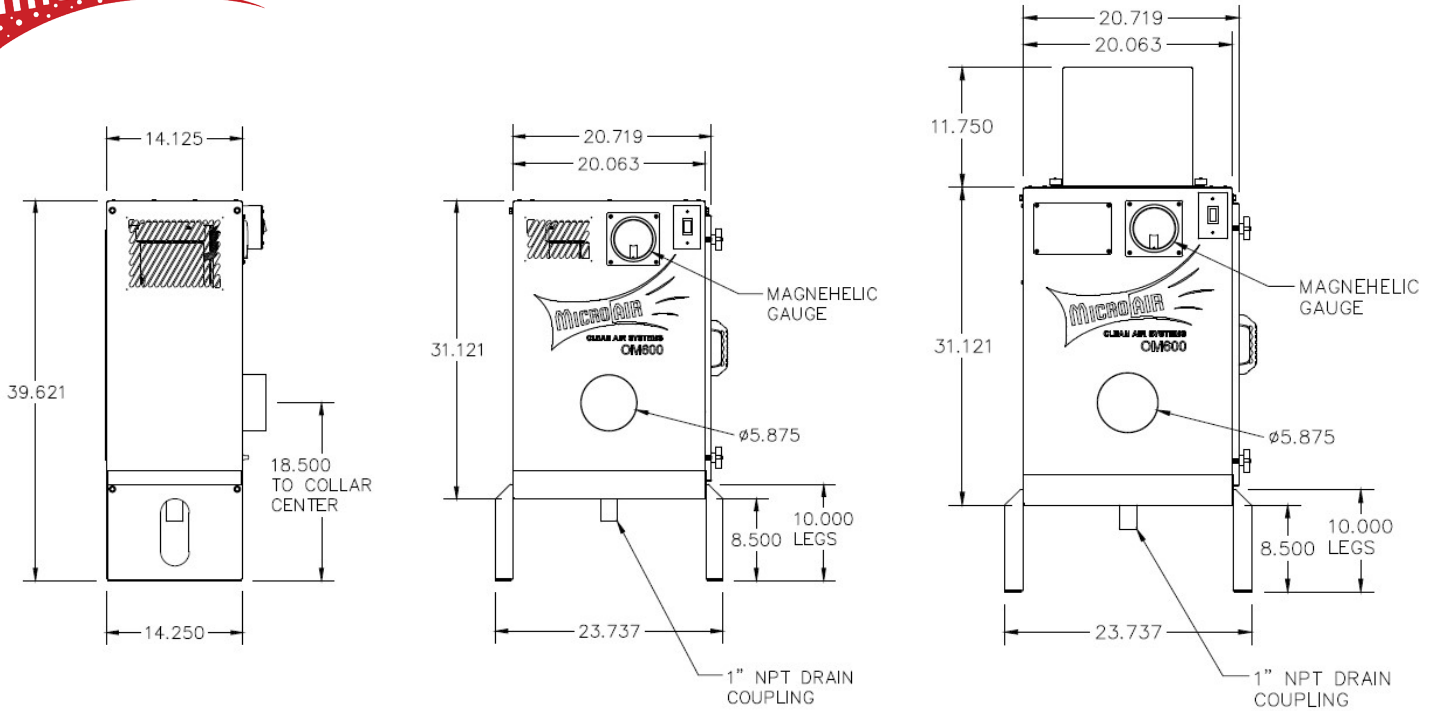
Clean air is then discharged at the front, rear, and left sides near the top of the unit if configured with standard exhaust. Optional exhaust options include top exhaust or top exhaust with 99.97% HEPA After-filter.



L3097-OM600-08/22



OM600



OM600

OM600 With HEPA AFTERFILTER

OM600 SPECIFICATIONS:

<p>OVERALL DIMENSIONS: 40 H X 247" W X 18" D WITH STANDARD LEGS & STANDARD EXHAUST 58" H X 24" W X 18" D WITH LONG LEGS & HEPA AFTERFILTER EXHAUST</p> <p>WEIGHT: *120 LBS ACTUAL WEIGHT *180 LBS SHIPPING WEIGHT *WEIGHT VARIES DEPENDING UPON OPTIONS SELECTED</p> <p>CABINET: HEAVY DUTY 16 GA. WELDED GALVANEAL STEEL W/EXTERIOR SURFACES GROUND SMOOTH</p> <p>FINISH: INDUSTRIAL GRADE TEXTURED BAKED ENAMEL PAINT INSIDE AND OUT * COLOR OPTIONS ARE CRIMSON RED, BLACK, OR STORM GRAY</p> <p>PREFILTER OPTIONS: 9.5" X 19.38 X 3" MIST-X (CHEVRON) PRE-FILTER 9.5" X 19.38" X 2" BAFFLER PRE-FILTER 9.5" X 19.38" X 2" MESH PRE-FILTER 9.5" X 19.38" X 1" MESH PRE-FILTER 9.5" X 19.38" X 2" MAXI-GRID PRE-FILTER (PINK SCRIM) SELECT ANY COMBINATION UP TO 4" TOTAL</p> <p>STANDARD PRIMARY FILTER OPTIONS: 9.5" X 19.38" X 5.86" 95% ASHRAE FILTER</p> <p>AFTERFILTER OPTIONS: 99.97% HEPA AFTER-FILTER OPTION WITH TOP EXHAUST</p> <p>FILTER ACCESS: SIDE LOAD THROUGH HINGED DOOR FOR EASY ACCESS</p> <p>NOISE LEVEL: 72 dBA @ 5" FROM EXHAUST</p> <p style="font-size: small;">SPECIFICATIONS SUBJECT TO CHANGE WITHOUT NOTICE</p>	<p>INLET / EXHAUST: INLET AT FRONT OF UNIT THROUGH 6" DIA INLET COLLAR STANDARD EXHAUST OPTION: EXHAUST OUT FRONT, REAR & LEFT SIDE NEAR THE TOP OF CABINET OPTIONAL EXHAUST OPTIONS: TOP EXHAUST OR TOP EXHAUST WITH 99.97% HEPA AFTER-FILTER</p> <p>MOTOR : 3/4 HP, 3450 RPM, 1 PHASE, TEFC 3/4 HP, 3450 RPM, 3 PHASE, TEFC</p> <p>BLOWER: DIRECT DRIVE, HEVY DUTY FORWARD INCLINED WHEEL</p> <p>INPUT VOLTAGE OPTIONS: 1 PHASE: 115/208-230V, 60 HZ 3 PHASE: 208-230/460V, 60 HZ</p> <p>MAX CURRENT 1 PHASE: 10.0 / 5.0 AMP 3 PHASE: 2.5-2.4 / 1.2 AMP</p> <p>AIR VOLUME: UP TO 600 CFM NOMINAL</p> <p>FILTER CHANGE INDICATOR OPTIONS: 0-5" MAGNEHELIC GAUGE 0-5" MINIHELIC GAUGE</p> <p>OIL DRAIN: 1" NPT PIPE COUPLING (FEMALE) STD. OPTIONAL COPPER P-TRAP OPTIONAL PVC P-TRAP</p> <p>MOUNTING OPTIONS: SLOTTED LEGS 10" H OR 16" H</p>
---	--