



BREATHE EASY...Solutions for Clean, Safe Air

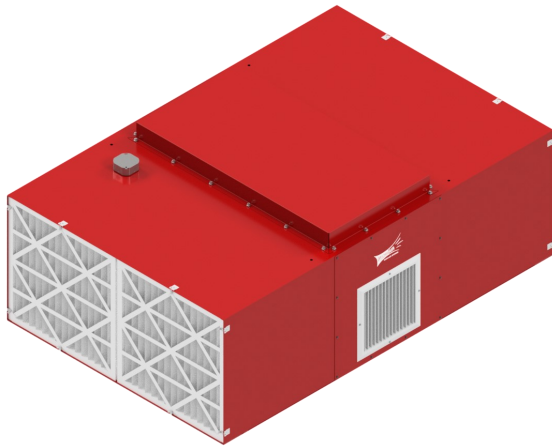
Ambient T-Style Air Cleaner MXT7000

Specifications and Technical Data

TYPICAL APPLICATIONS:

Ambient Capture of Process Dusts / Mists
Generated in Manufacturing processes:

- Welding Smoke & Fumes
- Grinding / Sanding / Polishing
- Metalworking / Composites
- Coolant / Oil Mist & Smoke
- Other Nuisance Dusts Generated in Industrial Processes



STANDARD FEATURES:

- T-SHAPED DESIGN—DUAL INLET EACH END WITH SINGLE CENTER EXHAUST
- 4" PLEATED PRE-FILTER
- BELT DRIVEN BLOWER
- ADJUSTABLE 4-WAY EXHAUST GRILLE
- QUIET OPERATION 75 dBA AT 6' WITH SILENCER
- NO DUCTING REQUIRED
- CFM UP TO 7,500

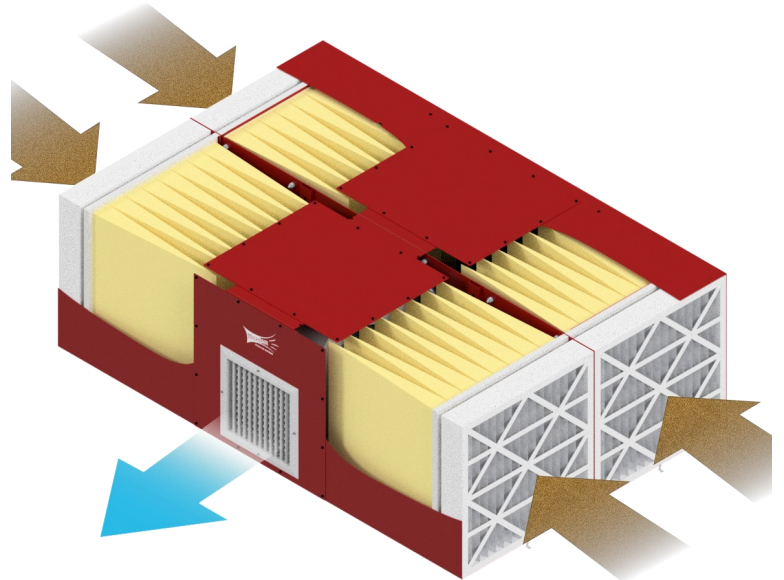
OPTIONS:

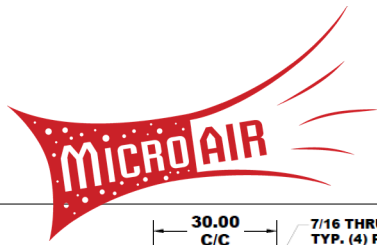
- HORIZONTAL OR VERTICAL CABINET
- 0-5" MAGNEHELIC GAUGE
- MERV 8 SCRIM PRE-FILTER ADDITIONAL "FILTER-SAVER" OPTION
- SILENCER
- MULTIPLE MOUNTING OPTIONS AVAILABLE
- 1) EYEBOLTS
- 2) C-CHANNEL
- 3) WALL MOUNT-VERTICAL CONFIGURATION ONLY
- 4) FLOOR STAND-VERTICAL CONFIGURATION ONLY

HOW IT WORKS:

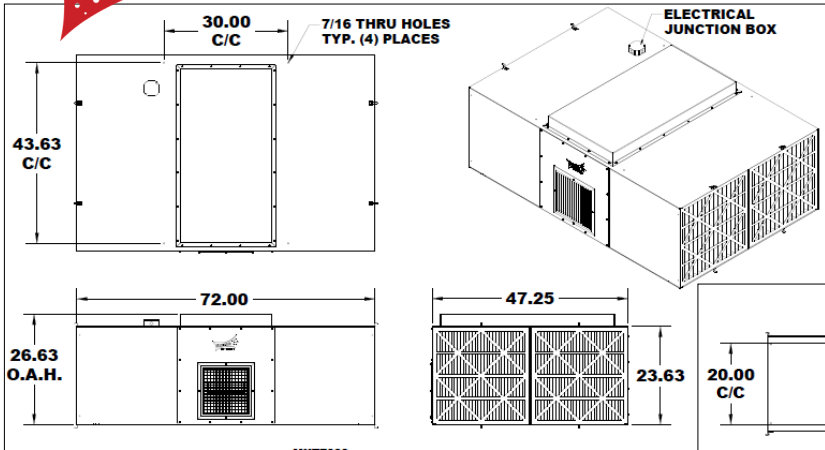
Contaminated air is drawn in from each end of the collector, and passes through the pleated pre-filters, effectively removing the larger particulate from the air-stream.

Next the air passes through the primary filtration system, 8 pocket bag filters, where the smaller particles of airborne impurities are captured. Clean, pollution-free air is then discharged out the center exhaust grille providing a *Breathe Easy*, safe, work environment.

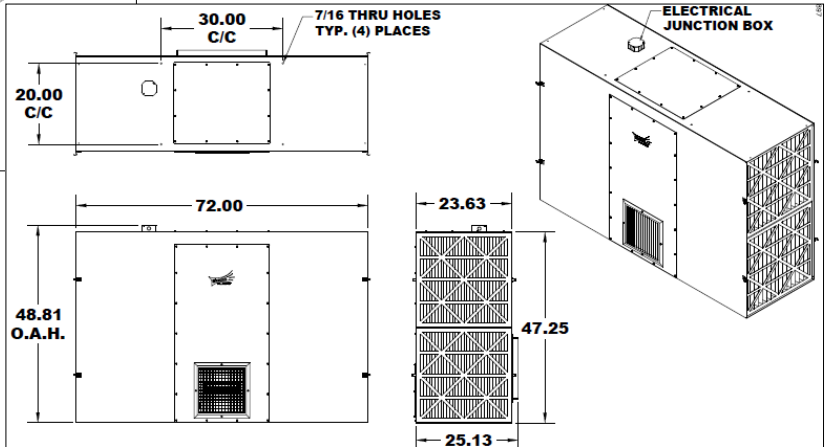




MXT7000



HORIZONTAL STACK CONFIGURATION



VERTICAL STACK CONFIGURATION

MXT7000 SPECIFICATIONS:

OVERALL DIMENSIONS:

- 27" H X 48" W X 72" L NO SILENCER—HORIZONTAL
- 50" H X 24" W X 72" L NO SILENCER—VERTICAL
- 27" H X 72" W X 72" L W/ NON-LOUVERED SILENCER—HORIZ. .
- 50" H X 48" W X 72" L W/ NON-LOUVERED SILENCER—VERTICAL
- 27" H X 73" W X 72" L W/ LOUVERED SILENCER—HORIZONTAL.
- 50" H X 49" W X 72" L W/ LOUVERED SILENCER—VERTICAL

WEIGHT:

- *400 LBS ACTUAL WEIGHT
- *450 LBS SHIPPING WEIGHT
- *WEIGHT VARIES DEPENDING UPON OPTIONS SELECTED

CABINET:

- *HEAVY DUTY 17 GA. WELDED GALVANEAL STEEL W/EXTERIOR SURFACES GROUND SMOOTH
- *OPTIONS FOR HORIZONTAL OR VERTICAL CONFIGURATION

FINISH:

- INDUSTRIAL GRADE TEXTURED BAKED CRIMSON RED ENAMEL PAINT—INSIDE AND OUT

FILTRATION OPTIONS:

- FOUR EA. MERV 15, 24" X 24" X 22" 95% BAG FILTERS
- FOUR EA. MERV 15, 24" X 24" X 22" 55% BAG FILTERS

PREFILTER

- FOUR EA. 24" X 24" X 4" PLEATED PREFILTER (STD.)
- TWO EA. MERV 8 SCRIM PRE-FILTER (OPTIONAL)

FILTER ACCESS:

- FRONT LOAD, EACH END FOR EASY ACCESS

NOISE LEVEL:

- 82 dBA AT 6' AWAY FROM UNIT—NO SILENCER
- 75 dBA AT 6' AWAY FROM UNIT W/ NON-LOUVERED SILENCER
- 77 dBA AT 6' AWAY FROM UNIT W/ LOUVERED SILENCER

INLET / EXHAUST:

- T-STYLE INTAKE AT EACH END / EXHAUST CENTER THROUGH 4 WAY ADJUSTABLE GRILLE

MOTOR:

- 5 HP, 1765 RPM, TEFC

BLOWER:

- 15-9 BELT DRIVEN, 1000 RPM

INPUT VOLTAGE:

- 230/460 VAC, 60 Hz, 3-PHASE

MAX CURRENT:

- 13.2 / 6.6 AMPS

AIR FLOW:

- UP TO 7,500 CFM

FILTER CHANGE INDICATOR (OPTIONAL):

- 0-5" MAGNEHELIC GAUGE

MOUNTING OPTIONS:

- EYEBOLTS, C-CHANNEL, WALL MOUNT (VERTICAL ONLY), FLOOR STAND (VERTICAL ONLY)