



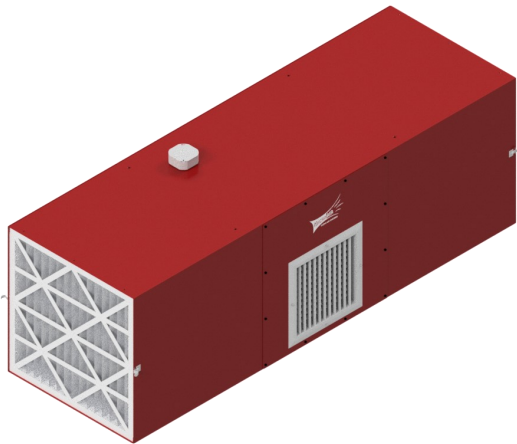
BREATHE EASY...Solutions for Clean, Safe Air

Ambient T-Style Air Cleaner MXT3500 Specifications and Technical Data

TYPICAL APPLICATIONS:

Ambient Capture of Process Dusts / Mists
Generated in Manufacturing processes:

- Welding Smoke & Fumes
- Grinding / Sanding / Polishing
- Metalworking / Composites
- Coolant / Oil Mist & Smoke
- Other Nuisance Dusts Generated in Industrial Processes



STANDARD FEATURES:

- T-SHAPED DESIGN—
DUAL INLET EACH END
WITH SINGLE CENTER
EXHAUST
- 4" PLEATED PRE-FILTER
- DIRECT DRIVE BLOWER
- ADJUSTABLE 4-WAY
EXHAUST GRILLE
- QUIET OPERATION
67dBA AT 6'
- NO DUCTING REQUIRED
- UP TO 3,650 CFM

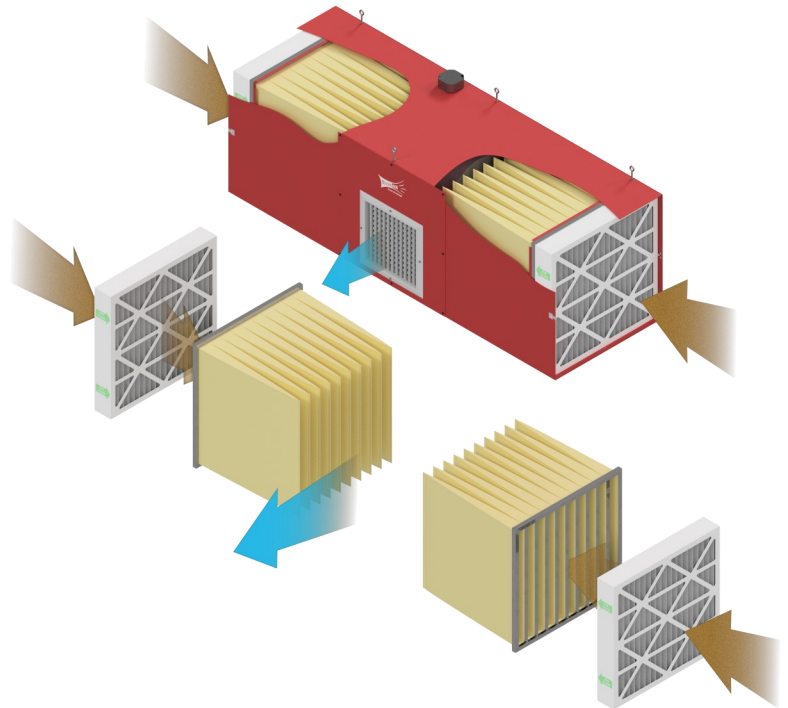
OPTIONS:

- 0-5" MAGNEHELIC
GAUGE
- MERV 8 SCRIM PRE-
FILTER ADDITIONAL
"FILTER-SAVER" OPTION
- SILENCER
- MULTIPLE MOUNTING
OPTIONS AVAILABLE
 - 1) EYEBOLTS
 - 2) C-CHANNEL
 - 3) WALL MOUNT
 - 4) FLOOR STAND

HOW IT WORKS:

Contaminated air is drawn in from each end of the collector, and passes through the pleated pre-filters, effectively removing the larger particulate from the airstream.

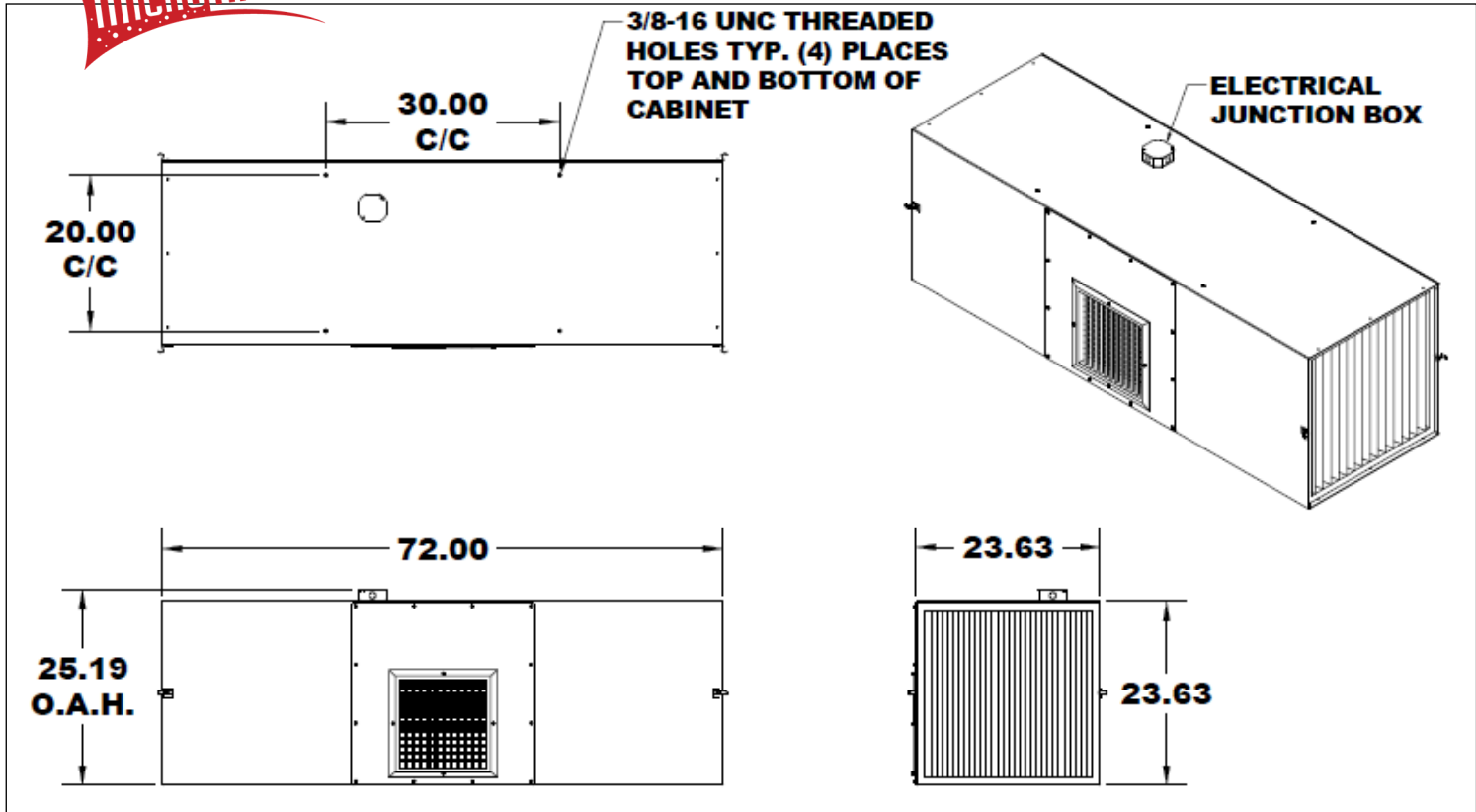
Next the air passes through the primary filtration system, 8 pocket bag filters, where the smaller-particles of airborne impurities are captured. Clean, pollution-free air is then discharged out the center exhaust grille providing a *Breathe Easy*, safe, work environment.



L3035-0822



MXT3500



MXT3500 SPECIFICATIONS:

OVERALL DIMENSIONS:

24" D X 24" W X 72" L
 48.39" D X 24" W X 72" L WITH SILENCER

WEIGHT:

*160 LBS ACTUAL WEIGHT
 *200 LBS SHIPPING WEIGHT
 *WEIGHT VARIES DEPENDING UPON
 OPTIONS SELECTED

CABINET:

HEAVY DUTY 17 GA. WELDED GALVANEAL STEEL
 W/EXTERIOR SURFACES GROUND SMOOTH

FINISH:

INDUSTRIAL GRADE TEXTURED BAKED
 CRIMSON RED ENAMEL PAINT—INSIDE AND OUT

FILTRATION OPTIONS:

TWO EA. MERV 15, 24" X 24" X 22" 95% BAG FILTERS
 TWO EA. MERV 15, 24" X 24" X 22" 55% BAG FILTERS

PREFILTER

TWO EA. 24" X 24" X 4" PLEATED PREFILTER (STD.)
 TWO EA. MERV 8 SCRIM PRE-FILTER (OPTIONAL)

FILTER ACCESS:

FRONT LOAD, EACH END FOR EASY ACCESS

SPECIFICATIONS SUBJECT TO CHANGE WITHOUT NOTICE

NOISE LEVEL:

67dBA AT 6' AWAY FROM UNIT— NO SILENCER
 60 Dba AT 6' AWAY FROM UNIT—WITH SILENCER

INLET / EXHAUST:

T-STYLE INTAKE AT EACH END / EXHAUST CENTER
 THROUGH 4 WAY ADJUSTABLE GRILLE

MOTOR:

1 HP, 1075 RPM. SINGLE-SPEED, DIRECT DRIVE

BLOWER:

10-10 DIRECT DRIVE

INPUT VOLTAGE:

115 VAC, 60 Hz, 1-PHASE

MAX CURRENT:

11.8 AMPS

AIR FLOW:

3650 CFM

FILTER CHANGE INDICATOR (OPTIONAL):

0-5" MAGNEHELIC GAUGE

MOUNTING OPTIONS:

EYEBOLT, C-CHANNEL, WALL-MOUNT,
 FLOOR STAND

L3035-0822