

MX6000

Specifications and Technical Data

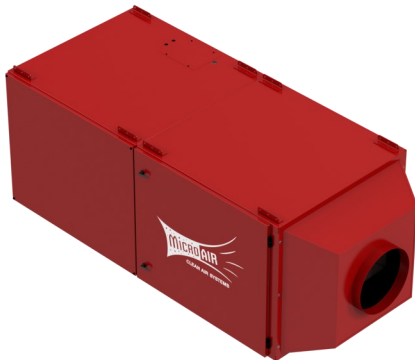
TYPICAL APPLICATIONS:

AMBIENT OR SOURCE CAPTURE OF:

- WELD SMOKE AND FUMES
- GRINDING / SANDING / POLISHING DUSTS
- DUSTS IN METALWORKING / COMPOSITES PROCESSES
- OIL / COOLANT MIST
- OTHER NUISANCE DUSTS GENERATED IN INDUSTRIAL PROCESSES
- ODOR CONTROL



MX6000—AMBIENT COLLECTION



MX6000—SOURCE CAPTURE

STANDARD FEATURES:

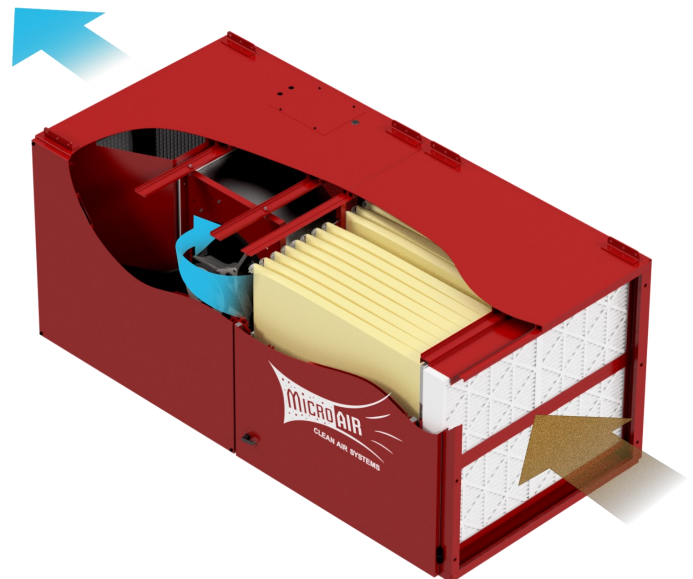
- 6,000 CFM NOMINAL
- HIGH CAPACITY ALLOWS FOR MULTIPLE DROPS WITHOUT CFM LOSS
- BUILT-IN SILENCER PLENUM
- 7 1/2 HP MOTOR/BLOWER
- MOTOR STARTER / OVERLOAD RELAY STANDARD
- 4-WAY ADJUSTABLE EXHAUST GRILLES
- HINGED DOOR FOR EASY FILTER ACCESS
- CAM-LOCK POSITIVE FILTER SEALING SYSTEM ENSURES NO BY-PASS
- LOW NOISE LEVEL—76dBA AT 6' FROM EXHAUST

OPTIONS:

- 16" DIAMETER INLET PLENUM FOR DUCTED APPLICATIONS
- SIDE EXHAUST PLENUM
- AFTER-FILTER MODULE—FOR USE OF HEPA AND/OR CARBON AFTERFILTERS
- REMOTE ON/OFF SWITCH IN NEMA-1 TYPE ENCLOSURE
- MULTIPLE PREFILTER OPTIONS
- MULTIPLE MAIN FILTER OPTIONS
- WRAP-AROUND PRE-FILTER
- MULTIPLE DRIVE OPTIONS FOR VARIOUS EXTERNAL STATIC REQUIREMENTS
- SIDE—EXHAUST PLENUM
- UPGRADED OIL MIST DOOR WITH DIVERTER AND OIL DRAIN PLUG FOR MIST APPLICATIONS
- MULTIPLE PULLEY COMBINATIONS FOR SPECIFIC STATIC REQUIREMENTS

HOW IT WORKS:

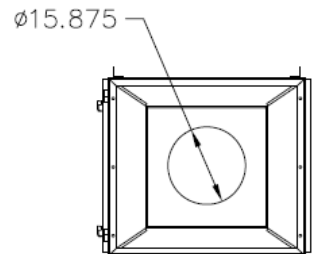
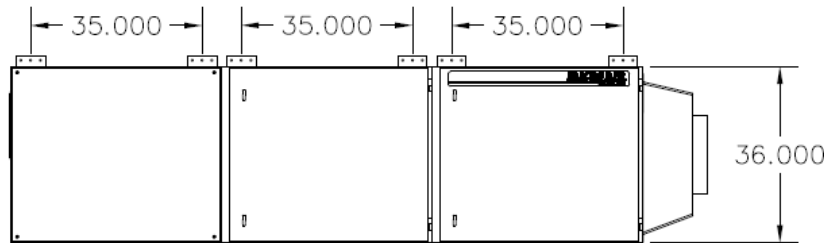
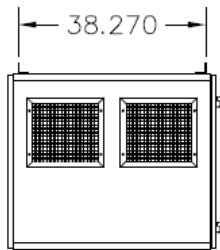
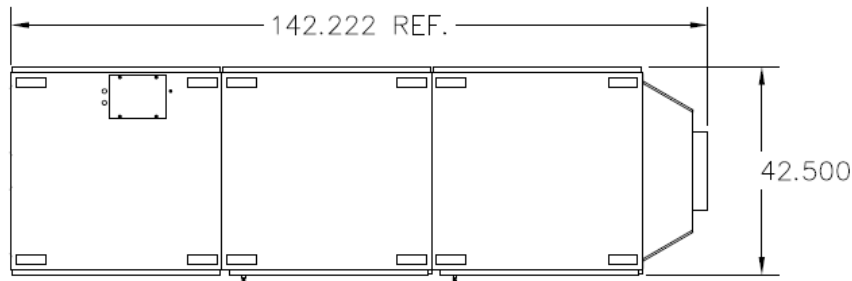
POLLUTED AIR IS DRAWN THROUGH THE PRE-FILTER SECTION WHERE LARGER PARTICLES OF THE POLLUTANT ARE CAPTURED. NEXT THE AIR PASSES THROUGH THE PRIMARY BAG FILTER WHERE THE SMALLER PARTICLES ARE CAPTURED. IF EQUIPPED WITH HEPA OR CARBON AFTER-FILTER, AIR THEN PASSES THROUGH THAT SECTION, WHERE ODORS ETC. ARE ELIMINATED, EMITTING BREATHE EASY, CLEAN SAFE AIR INTO THE WORKPLACE.



L2246-MX6000-05/22



MX6000



MX6000 EQUIPPED WITH INLET PLENUM AND AFTER-FILTER MODULE

MX6000 SPECIFICATIONS:

OVERALL DIMENSIONS:

- 36" H X 42" W X 86" L (2 MODULE—STRAIGHT THROUGH EXHAUST)
- 36" H X 42" W X 119" L (2 MODULE WITH SIDE EXHAUST PLENUM)
- 36" H X 42" W X 129" L (3 MODULE WITH AFTER-FILTER MODULE)
- 36" H X 42" W X 142" L (3 MODULE WITH AFTER-FILTER & INLET PLENUM)

WEIGHT:

- *750 LBS ACTUAL WEIGHT
- *825 LBS SHIPPING WEIGHT
- *WEIGHT VARIES DEPENDING UPON OPTIONS SELECTED

CABINET:

HEAVY DUTY 14 GA. WELDED GALVANEAL STEEL W/EXTERIOR SURFACES GROUND SMOOTH

FINISH:

INDUSTRIAL GRADE TEXTURED BAKED
CRIMSON RED ENAMEL PAINT—INSIDE AND OUT

PREFILTER OPTIONS (4" TOTAL PREFILTER SPACE):

- 4 EA 16" X 20" X 4" 35% EFFICIENT PLEATED PREFILTERS
- OR A COMBINATION OF:
 - 4 EA 16" X 20" X 2" ALUMINUM MESH PREFILTERS
 - 4 EA 16" X 20" X 2" BAFFLE IMPINGE PREFILTERS
 - 4 EA. 16" X 20" X 2" PLEATED PREFILTERS
- WRAP-AROUND PRE-FILTER

PRIMARY FILTER OPTIONS:

- 4 EA. 16" X 20" X 36" 55% BAG FILTER
- 4 EA. 16" X 20" X 36" 95% BAG FILTER
- *4 EA 16" X 20" X 36" 95% OIL MIST BAGS
- *(REQUIRES OPTIONAL OIL MIST DOOR W/DIVERTER ,OM GASKETING AND OIL DRAIN PLUG)

OPTIONAL AFTER-FILTER MODULE:

CAPABLE OF HOLDING 4 EA HEPA AFTER-FILTERS, 4 EA. CARBON MODULES, OR A COMBINATION OF BOTH. EACH CARBON MODULE WILL HOLD 30 LBS OF CARBON FOR UP TO 120 LBS OF CARBON.

SPECIFICATIONS SUBJECT TO CHANGE WITHOUT NOTICE

FILTER ACCESS:

SIDE LOAD THROUGH HINGED DOOR FOR EASY ACCESS

NOISE LEVEL:

76 dBA @ 5" FROM EXHAUST

INLET / EXHAUST:

STRAIGHT EXHAUST—INTAKE AT END / EXHAUST AT OPPOSITE END THROUGH 4-WAY ADJUSTABLE GRILLE
SIDE EXHAUST—INTAKE AT END / EXHAUST MODULE WITH EITHER FRONT OR REAR EXHAUST

MOTOR OPTIONS:

7 1/2 HP, SINGLE SPEED, 208-230/460V, 60 HZ, THREE PHASE, TEFC

BLOWER:

15-11 FORWARD INCLINED BLOWER, 2,100 MAXIMUM RPM

DRIVE SYSTEM:

MULTIPLE PULLEY COMBINATIONS AVAILABLE FOR VARIOUS STATIC REQUIREMENTS. CONSULT FACTORY:

- 1375 RPM CURVE
- 1530 RPM CURVE
- 1675 RPM CURVE
- 1800 RPM CURVE

INPUT VOLTAGE OPTIONS:

7 1/2 HP, 208-230/460V, 60HZ, 3-PHASE
UNIT ON/OFF CIRCUIT IS 120 VAC

MAX CURRENT

- 208-230V—18.6 FLA
- 460V—9.4 FLA

AIR VOLUME:

UP TO 6,000 CFM NOMINAL, , DEPENDENT ON OPTIONS SELECTED.
CONSULT FACTORY

FILTER CHANGE INDICATOR OPTIONS:

0-5" MAGNEHELIC GAUGE, STD.