



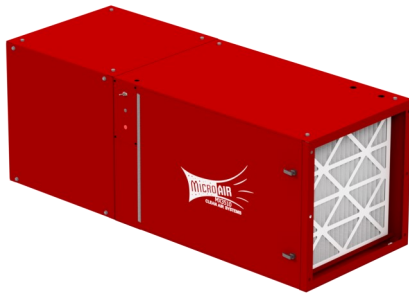
BREATHE EASY...Solutions for Clean, Safe Air

MX3510

Specifications and Technical Data

TYPICAL APPLICATIONS:

- AMBIENT DUST OR MIST CAPTURE
- SOURCE CAPTURE PROCESS DUSTS & MISTS
- WELDING SMOKE & FUMES
- GRINDING / SANDING / POLISHING
- METALWORKING / COMPOSITES
- OTHER NUISANCE DUSTS GENERATED IN INDUSTRIAL PROCESSES



HOW IT WORKS:

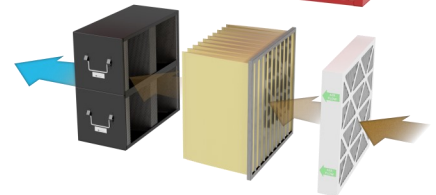
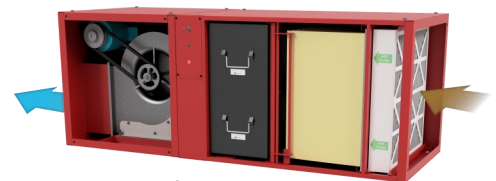
Polluted air flows through a pleated or foam prefilter, effectively removing the larger particles of the pollutant. Next the air passes through the main filtration system. This portion contains the primary filter media, a bag filter, HEPA filter, Carbon module or a combination. This system captures minute particles of airborne impurities and absorbs gases and odors. The discharged air is then pollution-free.

STANDARD FEATURES:

- 2,000—3,500 CFM - DEPENDING ON OPTIONS SELECTED—CONSULT FAN CURVES
- BELT DRIVEN—BLOWER
- SIDE LOAD. EASY FILTER ACCESS
- FILTER CHANGE LIGHT OR MAGNAHELIC GAUGE
- CAM-LOCK POSITIVE FILTER SEALING
- FULL RANGE OF OPTIONS

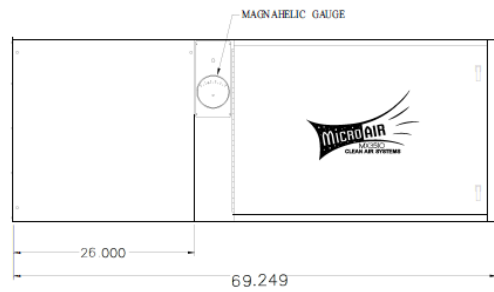
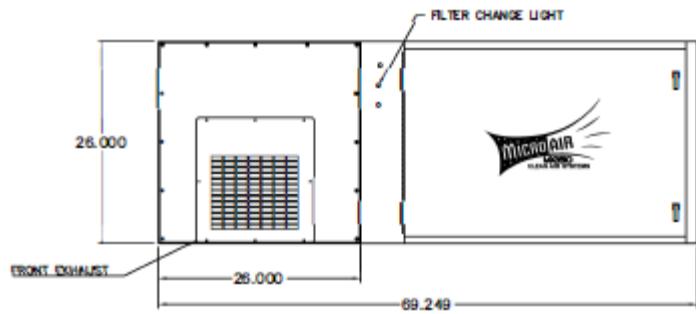
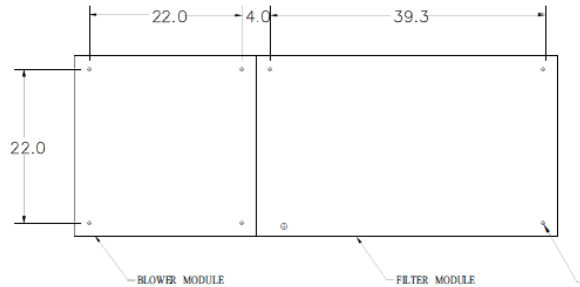
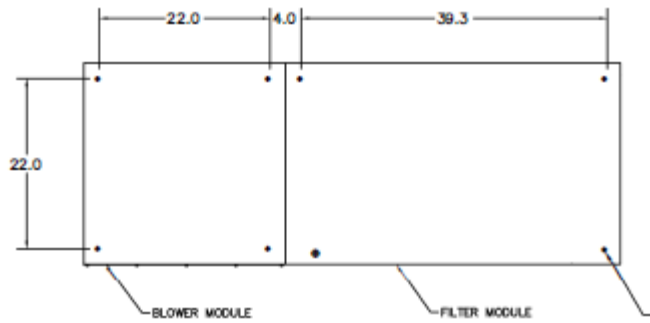
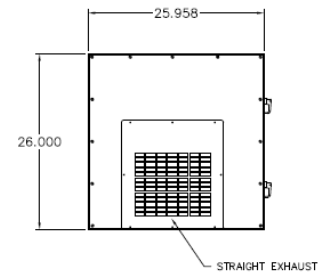
OPTIONS:

- 1-1/2 OR 3 HP MOTOR OPTIONS
- WRAP-AROUND PREFILTER MODULE
- 99.97% DOP HEPA FILTER
- 24" x 24" x 12" REFILLABLE MODULES— WITH UP TO 80 LBS OF CARBON
- MULTIPLE PRE-FILTER OPTIONS
- MULTIPLE FILTER OPTIONS
- OIL IMPINGER / OIL DRAIN KIT FOR MIST COLLECTION
- MULTIPLE MOUNTING OPTIONS AVAILABLE
- PULLEY OPTIONS FOR LOW,/MED./HIGH STATIC APPLICATIONS
- SOURCE CAPTURE MODULE WITH ONE, TWO OR THREE INLETS
- MOTOR CONTROLS FOR 3-PHASE OPERATION
- EXHAUST OPTIONS— STRAIGHT/FRONT/REAR
- SILENCER FOR STRAIGHT EXHAUST





MX3510



Side (Front) Exhaust

Straight Through Exhaust

MX3510 SPECIFICATIONS:

OVERALL DIMENSIONS:

26" H X 26" W X 69.5" L NO SILENCER
 26" H X 26" W X 93.5" L W / SILENCER

WEIGHT:

*268LBS ACTUAL WEIGHT
 *300 LBS SHIPPING WEIGHT
 *WEIGHT VARIES DEPENDING UPON OPTIONS SELECTED

CABINET:

HEAVY DUTY 16 GA. WELDED GALVANEAL STEEL
 W/EXTERIOR SURFACES GROUND SMOOTH

FINISH:

INDUSTRIAL GRADE TEXTURED BAKED
 CRIMSON RED ENAMEL PAINT—INSIDE AND OUT

FILTRATION OPTIONS:

ONE EA. MERV 15, 24" X 24" X 32" 95% BAG FILTERS
 ONE EA. MERV 15, 24" X 24" X 32" 55% BAG FILTER
 ONE EA MERV 15, 24" X 24" X 15" 55% BAG FILTER
 ONE EA MERV 15, 24" X 24" X 15" 95% BAG FILTER
 REFILLABLE MODULE W/ CARBON (UP TO 80 LBS CARBON)
 95% OR 99.97% DOP HEPA

PREFILTER

2" PLEATED PRE-FILTER
 2" ALUMINUM MESH PRE-FILTER
 2" BAFFLE IMPINGER
 4" PLEATED PRE-FILTER
 WRAP-AROUND DUO-CUBE PREFILTER

FILTER ACCESS:

FRONT LOAD FOR EASY ACCESS

FILTER ACCESS:

FRONT LOAD FOR EASY ACCESS

NOISE LEVEL:

79 dBA @ 6' FROM EXHAUST

INLET / EXHAUST:

STRAIGHT EXHAUST—INTAKE AT END / EXHAUST AT OPPOSITE
 END THROUGH 4 WAY ADJUSTABLE GRILLE
 SIDE EXHAUST—INTAKE AT END / EXHAUST EITHER FRONT OR
 REAR

MOTOR:

1-1/2 HP, 120V, 60 HZ, 1-PHASE, TEFC MOTOR
 3 HP, 230/460 V, 60 HZ, 3-PHASE, TEFC MOTOR

BLOWER:

12-9 BELT DRIVEN

INPUT VOLTAGE:

1-1/2 HP — 120V, 60 HZ, 1-PHASE
 3 HP — 230/460V, 60 HZ, 3-PHASE

MAX CURRENT:

1-1/2 HP, 120V — 16 AMPS
 3 HP, 230V/460V — 8.4 / 4.2 AMPS

AIR FLOW:

UP TO 3,500 CFM—DEPENDENT ON OPTION CHOICES

FILTER CHANGE INDICATOR (OPTIONAL):

FILTER CHANGE LIGHT